



# SOLARA HOMES

Your Home and Nature in Harmony  
Website - [www.SolaraHomesFL.com](http://www.SolaraHomesFL.com)



## Solara Townhomes

### Only 25 Units Located Immediately Next to Downtown

Solara's "Terrace Homes" are unlike any other home. They combine the benefits and ease of maintenance of a townhome with the privacy and space of a single family residence. Included in each unit is a spectacular second floor garden terrace overlooking Lake Babcock and downtown. In the rear between the home and the 2 car garage is a 750 square foot totally private walled in courtyard designed for an optional pool and spa, or an in-law suite or a gazebo with outdoor kitchen, or a terrace with firepit and spa. Front porches provide inviting areas to socialize with friends and neighbors. Two unique floor plans offer different lifestyle options. Our Cambridge model offers downstairs master bedroom. The Kensington Model has a oversized master suite and bathroom with a 1,000 sq. ft. of open living space on the ground floor whose layout can be fully customized. Additional options include a concrete reinforced safe room, advanced full home air filtration systems, non VOC materials, state of the art home automation, ultra efficient solar assisted HVAC system, net metered solar power with backup generator. We allow significant customization and have a wide selection of finishes.



### Lake View Lots - Now Accepting Reservations - Pre Construction Discounts

Estimated Occupancy Summer 2019

Interior AC Space - From 1,850 to 1,950 Sq. Ft.

Priced From \$350,000 - Ask About Our \$50,000 Pre Construction Discount

For More Information Contact: 941 716 0720

Disclaimer: All photos, renderings, architectural plans, dimensions, units sizes, and posted prices are pre construction proposals and preliminary estimates. Final specs and prices may vary considerably. Contact sales agent for information.

**TOWNHOME WITH ROOF TOP TERRACE / REAR COURTYARD**  
**3 Bedroom / 2.5 Bath / 2 Car Garage / Optional Pool**



## The Cambridge - First Floor



### CAMBRIDGE MODEL

**Price Base Home:** \$425,000 - \$495,000

**Options Available:** Pool, Spa, Fire Pit, Outdoor Kitchen, Outdoor Shower, Solar Power, In Law Suite.

**Specifications:**

3 Bedrooms

2.5 Baths

Private Outdoor Courtyard - 750 Sq. Ft.

Private Patio off Kit and Bath - 450 Sq. Ft.

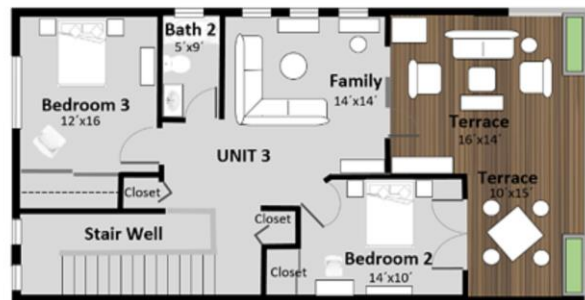
**Approx. AC space - 1,870 Sq. Ft.**

Open Terrace - 360 Sq. Ft.

Porches - 130 Sq. Ft.

Garage - 440 Sq. Ft.

**Approx. Total - 2,800 Sq. Ft.**



## Second Floor

